



**ANNUAL REPORT 2022**





## Content

### *Message from the Director*

Introducing Our Vocational Training Center

*Impact on Education*

*Impact on Women Empowerment*

*Impact on Gender equality*

*Impact On Nutrition*

Marjorie's Story

Celebrating our Team & Partnerships

Financial Reports

Thank you

How to Get Involved



## MESSAGE FROM THE DIRECTOR

Dear Friends,

The growth of our Foundation means we continuously increase our impact and the positive effects of our programs. Luketekelo (Faith) is in our name, so what does it mean to us and all the people involved in our Foundation?

“You cannot get through a single day without having faith that someone’s life will be impacted on the world around you. What you do makes a difference, and you have to decide what kind of difference you want to make.” – Jane Goodall

Impact is a long-term change, and this is so relevant to us, as we want to have a long-term effect on the people and the beautiful Zambian environment especially in north-western. We believe in creating opportunities for people (women and orphans to be precise) to make positive life choices and pathways for themselves – the ripple effect of these choices will in turn impact whole communities. It is Said that **Empower a Woman and a Whole Community Will Thrive.**

As you are reading this, you are either involved or interested in getting involved with our Foundation and in turn will play a role in this long-term impact. Whether it is providing better education, creating safe spaces for knowledge sharing and support, or funding equipment that assists us in getting to our goal, it will all contribute to the long-term impact we work towards every day.

We have captured in this little book, what impact means to some of the people involved in our Foundation and a heartfelt thank you to them for sharing this with us. Thank you to everyone involved in our journey, your belief in us and our work means so much.

Here’s to an impactful 2023 for all!

*m. mangisha*

Memory Grace Mangisha



## **OUR PLAN IS TO ESTABLISH A VOCATIONAL TRAINING CENTER**

This plan will be a Transformation To Vulnerable Women, Widows, Orphans ,Teen Pregnant and mothers and Communities In North-Western Province, Through The Implementation Of Sustainable Initiatives That Will Bring Hope And Enduring Change To Our People

We will provide transformation to our women with pathways out of poverty through our programmes. Women are a vital part of our future and can make a positive contribution when given the opportunity and knowledge they need. Women can be a great force for development and change, with our holistic approach we aim to give these vulnerable women and orphans in Zambia the best chance of real, long-term change to break the cycle of poverty for themselves and their community through four pillars: gender equality, education, wellness and livelihoods. With great joy, we announce our plans to build a Vocational Training center in Mufumbwe, North-western Zambia. The Vocational training center will serve as a center for women empowerment learning skills and livelihood opportunities. Currently, many of our programs /activities have been undertaken in collaboration with other partners including the orphanages to ensure that the beneficiaries are taken care of by the community and our organization and some training are done under trees , which limits safety and impact. Our goal is to Transform disadvantaged communities by improving education, empowering vulnerable women with vocational skills ,creating employment and alleviating Poverty. especially girls, to access resources dedicated to creating a brighter future. Building a Vocational training center will allow us to have all our programmes in one location, which will enhance our existing workshops and support additional community members from nearby locations. We provide our services to over 100 beneficiaries from various communities in Lusaka,solwezi and Mufumbwe , so having a space that is accessible to all will enable us to reach more Vulnerable women , provide additional opportunities for income generation, and create a safe environment in which and women, teen mothers and orphans can develop as leaders. Our health workshops will reach more young people and help them understand their reproductive health, thus avoiding and decreasing teenage pregnancy. This means that the younger generation in North-western Mufumbwe will be better equipped to overcome the many barriers they face as they become young adults.

*This is the 190 hectares of purchased Land for the Vocational Training Center for women empowerment*





Our goal is to see women and Men, girls and boys working together to establish that education and proper support can uplift families, and entire communities. The Vocational training center will assist teen mothers and orphans in completing grade 12 and in pursuing further education. Additionally, it will assist women and orphans with identifying options for their futures after grade 12 such as applying to universities, learning essential practical skills, or starting their own businesses. It will also be a safe place where, Teen mothers and orphans can study and get support while completing their homework

**Connecting youth and the community to our programmes**

How will the Vocational Training Center: Women | Community | Foundation

Expected outcomes:

Improved Livelihoods	Education	Gender Equality	Wellbeing
This program aims to improve economic opportunities for disadvantaged women by providing market-relevant skills training, entrepreneurship training, internships, mentoring, financial education, electronic literacy, awareness, eCommerce/eMarketing etc.	Safe place for orphaned children to do their studies and education curriculum is supported by enriching activities to broaden children’s minds. More young people furthering their education and skills.	Girls and women are able to make their own choices about their body, education, marriage, and livelihood. An increased number of women own businesses and are in skills-based employment.	Information is available for young people to make better choices about their health and wellbeing. Services available to specifically assist young people through physical and mental health challenges.

## OUR IMPACT ON EDUCATION FOR ALL

We improve access to education by sponsoring 40 orphans in Lusaka, and Solwezi with school fees and School requirements, Our Sponsor a Child programme aims to unlock the power of education.



In 2019 we started this Sponsor a child program by using own mean financial means. We started sponsoring 15 orphans at umoyo widows and orphanage foundation starting from grade 1-12 with all school requirements and these students have been receiving free school requirements as long -term key to a better life for the next generation, as unemployment among young people in Zambia stands 13.20%.

In 2022 the number grew from 15 to 20 orphan students at umoyo widows and orphanage and, 15 orphans in Solwezi and 5 orphaned in mufumbwe who have been receiving school requirements donations.



- Donated 80 chairs brand new mattresses to merciful beginning foundation to provide the disabled children with better living conditions.
- In Zambia, students are required to write exams at the end of grade 7 and 9 in order to continue to the next grade. 100% of the students in our Sponsor a Child program passed and were able to begin grade 8 and 10.
- Provided school uniforms and requirement to the children of School of Good Hope making sure they have the tools they need and feel proud on their way to school.
- We supported Thandiwe Zulu one of the orphaned child who has been on the Sponsor a child program who is 8 yrs. old, and we had to put her into school and she is has been performing well in class especially in the year 2022.



"To us, impact means to have a positive effect on someone else. But this involves a team of people, who have a shared vision, working together and utilizing everyone's skills and knowledge to influence something and drive change."





## IMPACT ON WOMEN EMPOWERMENT

Our women empowerment Insaka Programme focuses on connecting them to share challenges, discuss solutions and support each other. It is a place for these women together and learn about health, wellness, and gender equality. Vocational skills and job challenges are also on the agenda to discuss ideas and share advice.

15 participants entered Phase 1 of an entrepreneurial training program, Farmers of the Future, Farmers of the Future is an 18-month agroecology and business training program in the Greater Shakwa Area in that mentors and empowers local women with small business and entrepreneurial skill sets so they can start their own businesses while being environmentally responsible.

As a foundation, we empowered 2 women in Solwezi with tomato seedlings as startup capitals and this initiative has improved the living standards of these 2 women. As an organization, In December we managed to visit them and we bought tomatoes from them again in order to support their business.



We can see the impact we have on the area and on the local community itself because we are chipping away at the bigger problem, day by day, week by week."



## OUR IMPACT ON GENDER EQUALITY

35 women and 10 girls attended a Cervical cancer and early pregnancy workshop in Lusaka as part of our The Women Impact. We have planned next year to do a fundraising target for building a vocational training community Centre which will expand our workshops to additional community members, allow for more income-generating activities, and create a safe, encouraging space for 350 girls and women in North-western.

In Lusaka, we partnered with 1 local gender equality focused organizations to create weekly support groups for young vulnerable mothers and their children, deliver youth self-esteem workshops, job readiness and training sessions, and health promotion classes for elderly women.







"One Woman Can Make a Huge Difference, Because One Voice Can Trigger 10 Voices and Those 10 Voices Can Trigger Hundreds of Voices Creating an Avalanche After That."

*Doc Kabinda Musama*

Volunteer, The Girl Impact, Lusaka



## Girls in Lusaka & Solwezi Received Sanitary Pad Kits



### Impact from a Donate - The Pad Project

- Menstrual hygiene is better understood by girls
- Girls and boys have a platform to discuss issues that affect them



*When you learn, teach. When you get, give."* Maya Angelou





## 15 women participated in the the women empowerment workshop in 2022

The following are the results reported on participants who took part in the Women empowerment workshops

- 5 women learnt how to make earrings and other crafts and they become more assertive and supportive of each other
- An increase in community participation among women who participated in the workshops
- The women feel more comfortable supporting or speaking to their children on youth issues

## BENEFITS OF THE VOCATIONAL TRAINING CENTER

Empowering Women, especially girls, will be able to access valuable resources through the vocational training center. Education, skill-learning, and social support have the potential to help girls flourish between the ages of 10 and 18. Girls and young women will be equipped to choose their own pathways to become healthy, positive, and prosperous leaders.

### The Challenge

When young women are empowered to be confident, they can become leaders capable of overcoming the cycle of poverty within entire communities. Girls and young women will be provided with a support system and new opportunities through the women empowerment Programme. In addition to reshaping gender perspectives, we also boost gender equality through programmes designed for young men and boys.

## IMPACT ON NUTRIITION

Some people don't have food or enough food, while others are eating too much. There's only one way to fix this problem—and it starts with you and me. In 2016 when this foundation was born and one major role we have played in our community is the donation of food. In Lusaka, Solwezi and Mufumbwe vulnerable women and orphaned children lack of proper nutrition often leads to these people getting sick and being in such a small space means germs spread quickly. Most toilets are unsanitary and there is limited access to soap and water. In addition to providing vulnerable women and orphaned, 100 beneficiaries/people were supplied through our women empowerment feeding Programme, in which all participants received a nutritional packs, soap and to improve their hygiene and health











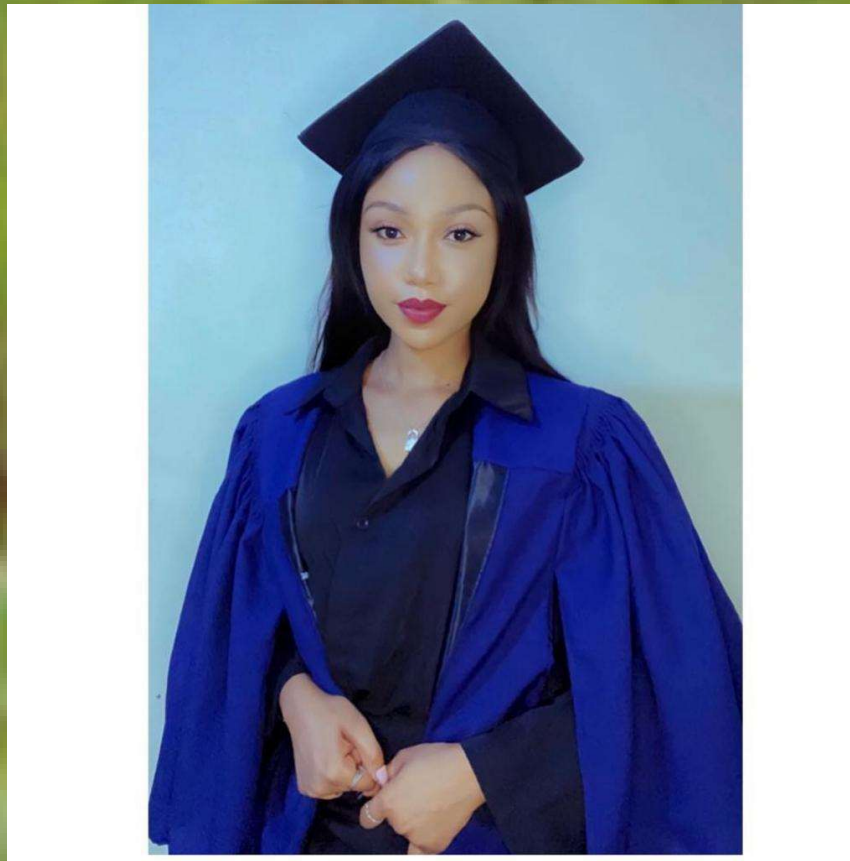
"To me impact means being a hero. Giving a hope for the future, changing the mindset of the vulnerable child in the community out there."

Marjorie Shangala  
Development & Communications Manager  
Lusaka, Zambia



## *Marjorie's Story*

When Marjorie found Luketekelo Foundation she was a student at Evelyn Hone college in Lusaka. After graduating, she started to volunteer as a translator part, but her passion for girls' education soon found its fit in women empowerment project. Her determination and vivacious spirit caught our attention and it was clear she is the perfect role model for the teen mothers of Mufumbwe and Solwezi. Now Marjorie uses her education in Social Work and her own story of determination to mentor the teen mothers we work with in order to find their voices and realize they can take control of their futures.







## *Celebrating our Team & Partnerships*

We would not be able to make the impact that we do without the teams on the ground. Luketekelo Foundation works side by side with our partners umoyo orphanage and widows in Lusaka and Luwi foundation

in Solwezi, to responsibly manage the generous donations received from our members and ensure we are positively impacting individuals, families, communities in North-western and Lusaka province. In return, luketekelo foundation brings dedicated volunteers, interns, and staff on the ground, who carry out year-round implementation and sustainability of the projects. On behalf of the Foundation, thank you to our project teams for working tirelessly with passion, perseverance, and enthusiasm. Thank you for believing in the work that you do and for investing in the communities around you. Thank you for making us stronger. Without you, the people in the communities we work with would be living very different lives, and for that, we applaud you.





# Financial Reports

			2022	Total	Total 2021
INCOMING RESOURCES	Note	Unrestricted	Restricted		
Donations		Funds	funds		K 5687.89
RESOURCES EXPENDED		59,981.89	00	54,294	
Direct charitable expenditure	2	13,000	00	46,981.89	
land costs and office expenditures	1	12,500	00	35,981.89	
TOTAL RESOURCES EXPENDED		25,500	00	34481.89	
NET MOVEMENT IN FUNDS		4,891	00	29,590.89	
Fund balances brought forward at 1 January 2021					K5,687.89
Fund balances carried forward at 31 December 2022					K29,590.89

All transactions are derived from continuing activities. All recognized gains and losses are included in the Statement of Financial Activities

# Thank you

2022 was a fantastic year for The Luketekelo Foundation, a big thanks goes out to all of those who helped us.

We want to take this opportunity to say thank you to a very important group of people who made this Foundation to be this impactful, our donors. Because of you, positive change was made in last year for individuals, families and communities. We look forward to continuing to watch you make an impact alongside us. A special thank you to:

We would also like to make a few special acknowledgments:

David Lasern, Egbert Mos, Dr. Kabinda Musama, Charity Butemwe, Mwandwe kangwa, kabwe kangwa, Mr. Lusambo, Dimas Mumba. Emmanuel Samu, Pastor Ton van der Wekken, Jesse Boorsma and Paulo Nyangu.

Christian church Donated K44,294 and Farmer Church donated K 10,000 Farmer church from Netherlands

Jesse Boorsma from Netherlands donated toys for the orphanages

Get Involved

Donate: To make a donation, please visit our website at

<https://www.luketekelo.org/support-us>

Volunteer: To volunteer on our projects, please visit

Fundraiser for us : visit our Support us page

Follow us: Facebook @luketekelo foundation

Instagram @ Luketekelo foundation

YouTube @ Luketekelo Foundation

Luketekelo Orphanage Foundation Office Plot 20148, off great east road 12, Munali, Lusaka

| Zambian NGO: DRINGO 101/1613/2021



